

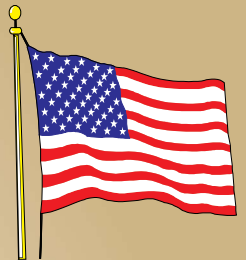


Building
AMERICA'S
Future... Today!



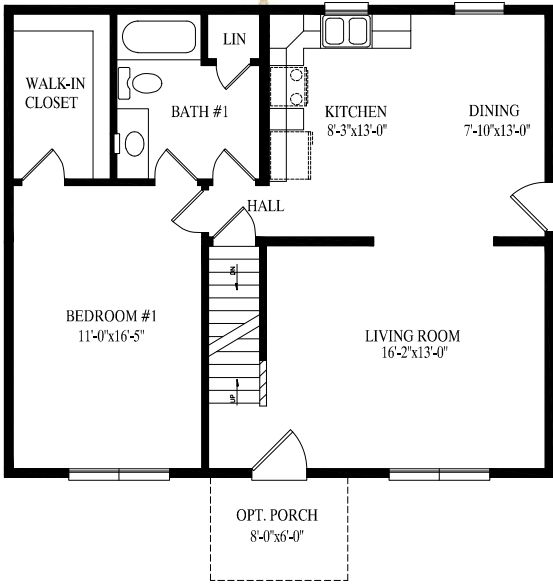
PROFESSIONAL
BUILDING
SYSTEMS, INC.

Cape Homes

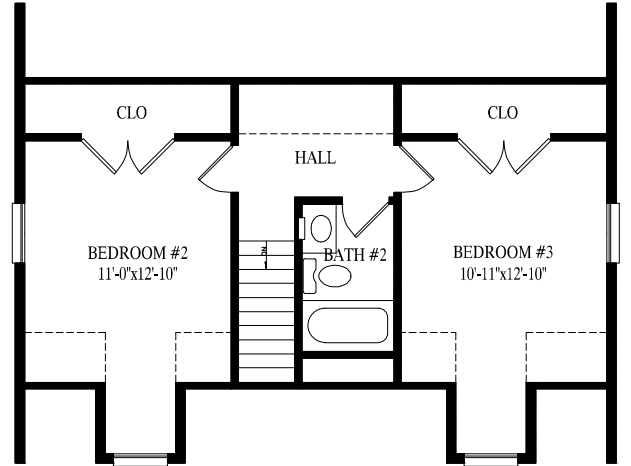


Made in USA

NORTHAMPTON



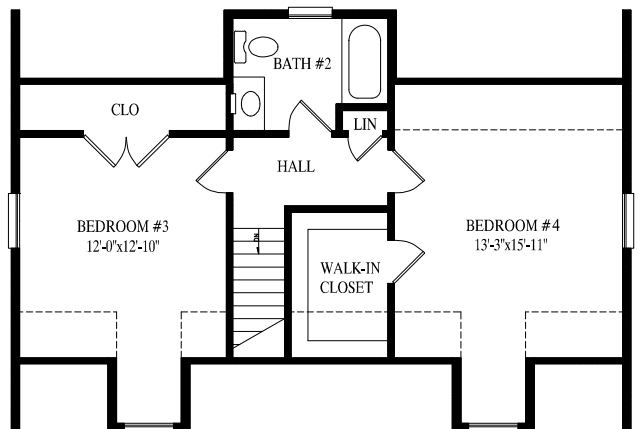
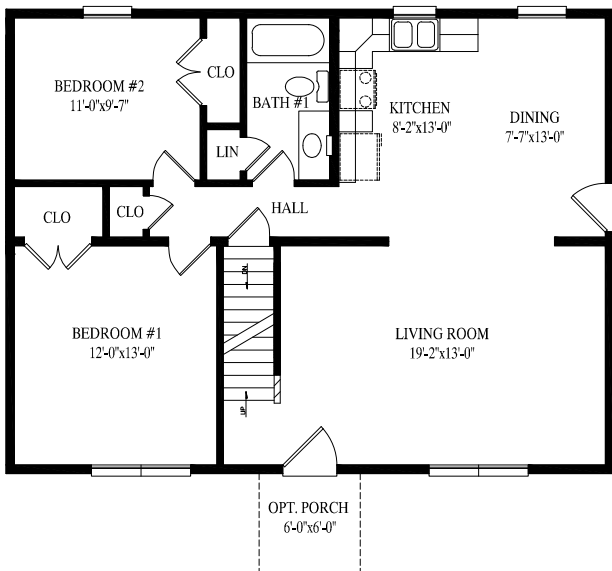
Northampton I
27' 6" x 32' Cape
880 sq. ft. first floor



Proposed Second Floor – 568 sq. ft.



Northampton II
27' 6" x 36' Cape
990 sq. ft. first floor



Proposed Second Floor – 674 sq. ft.

NOTE: Above models also available in 26' 4" & 31' 6" wide



Featured on the rear cover

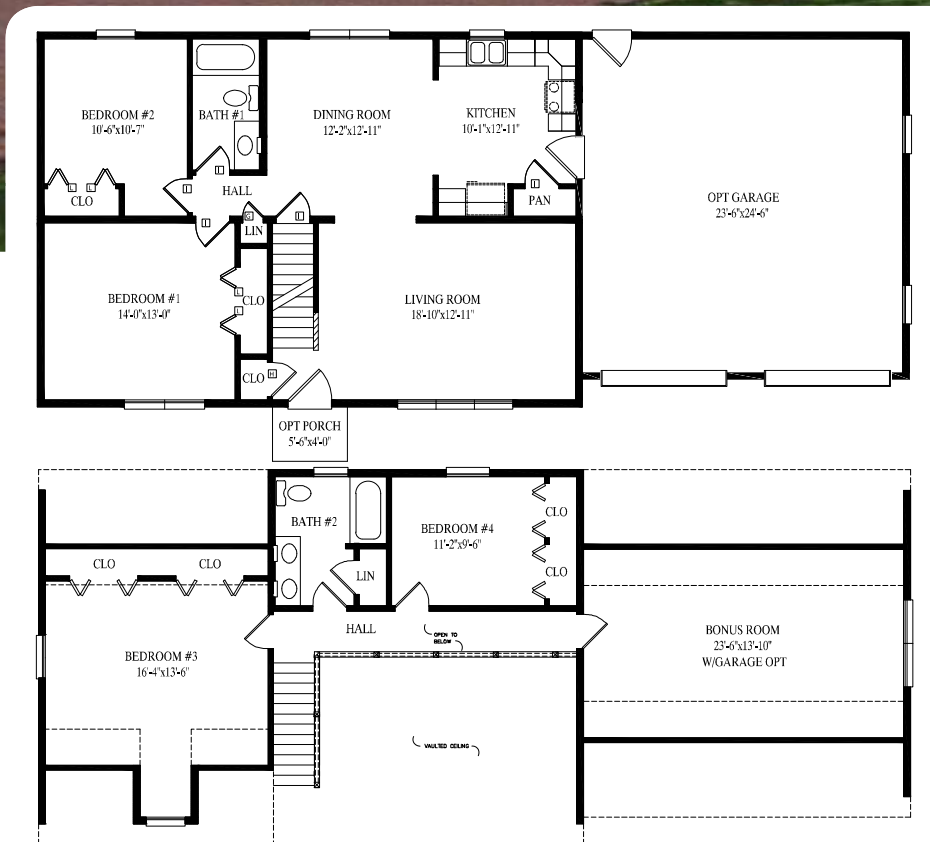


Northampton III

27' 6" x 40' Cape

1100 sq. ft. first floor

1812 sq. ft. w/garage option



Proposed Second Floor – 645 sq. ft.
w/garage option – 995 sq. ft.

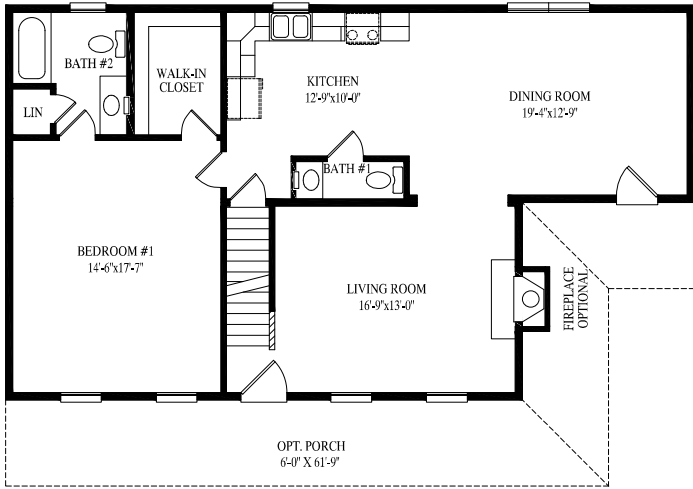
CAMERON

Cameron I

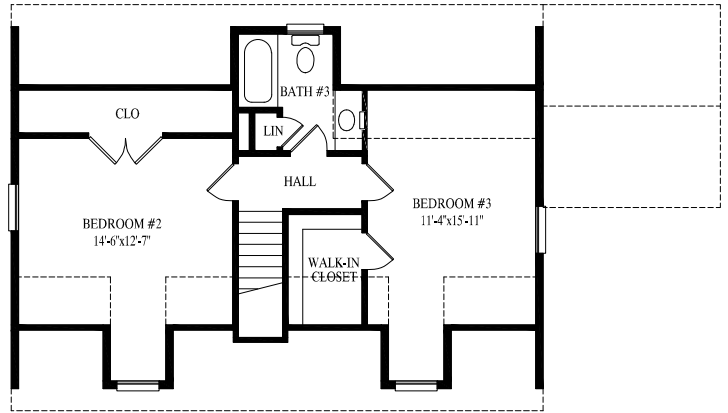
27' 6" x 36' 1/48' Cape

1155 sq. ft. first floor

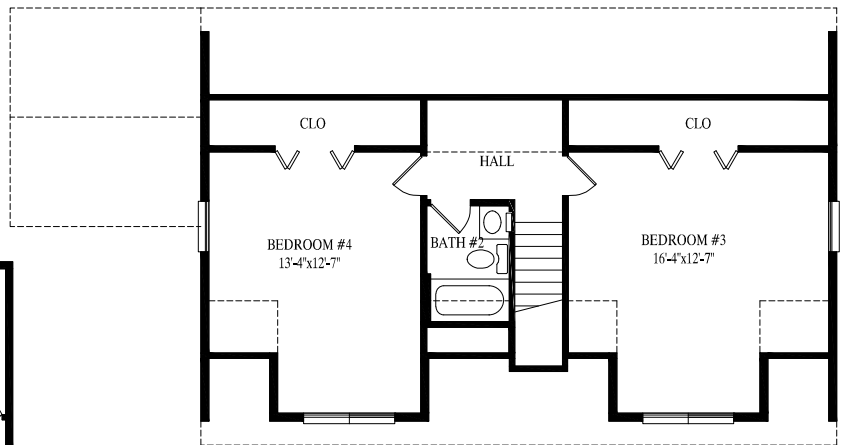
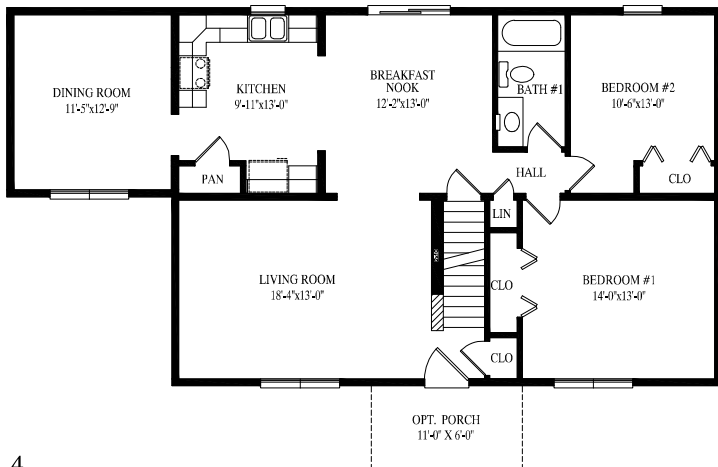
Also available in 26' 4" & 31' 6" wide



Featured on the front cover



Proposed Second Floor – 667 sq. ft.



Proposed Second Floor – 745 sq. ft.

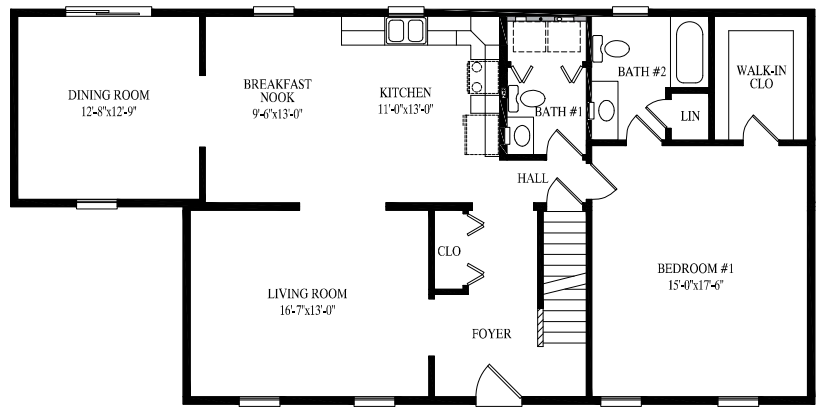


Cameron II

27' 6" x 40' 1/52' Cape

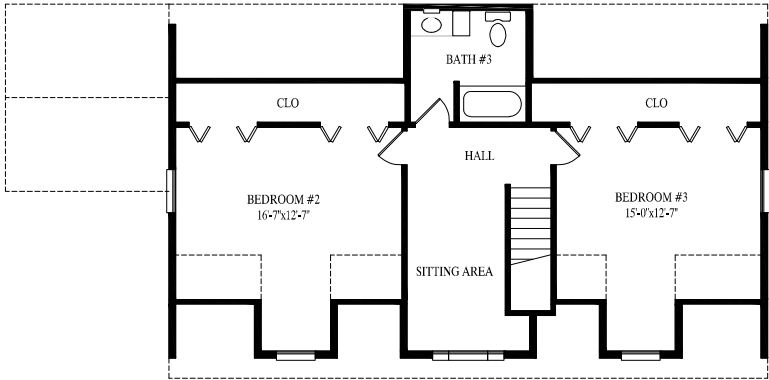
1265 sq. ft. first floor

Also available in 26' 4" & 31' 6" wide

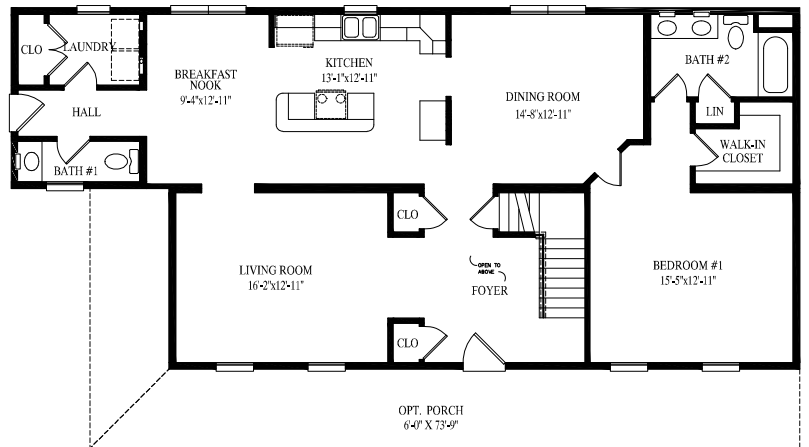


Cameron III

27' 6" x 44' 5/56' Cape
 1375 sq. ft. first floor
 Also available in 26' 4" & 31' 6" wide

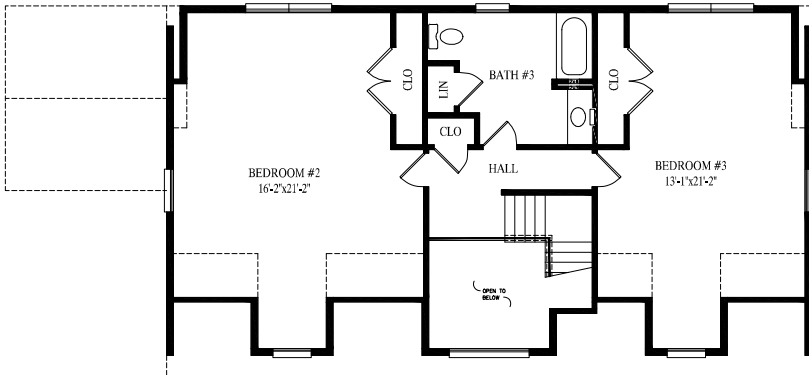


Proposed Second Floor – 871 sq. ft.



Cameron IV

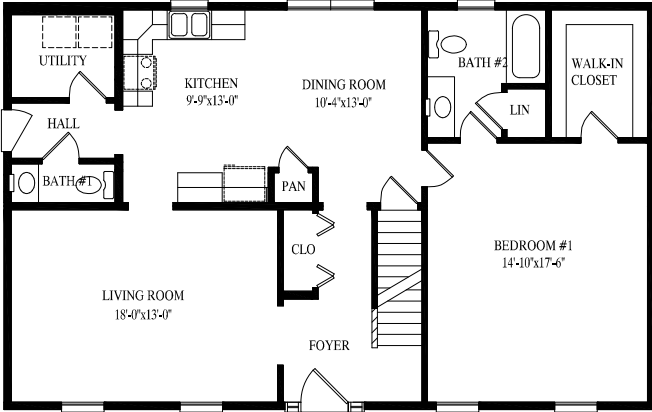
27' 6" x 48' 1/60' Cape
 1485 sq. ft. first floor
 Also available in 26' 4" & 31' 6" wide



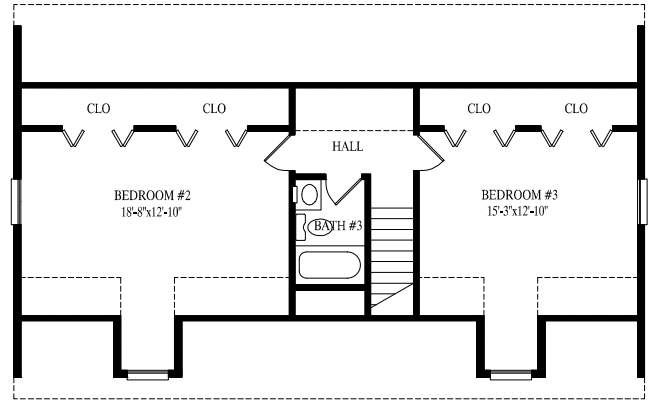
Proposed Second Floor – 1137 sq. ft.



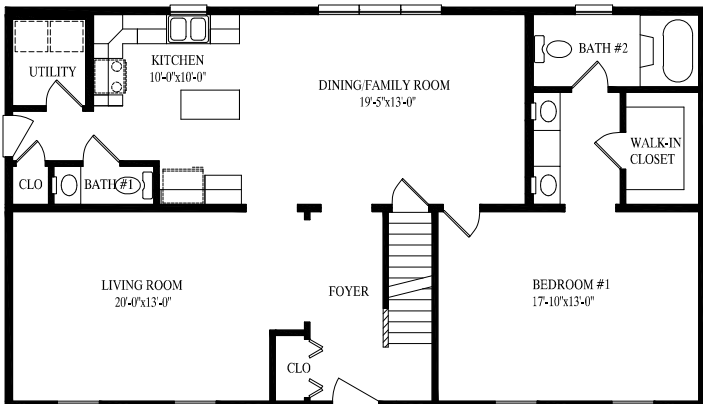
HUNTINGTON



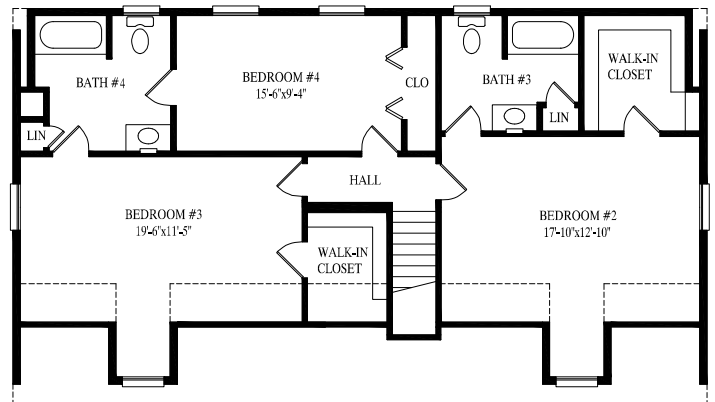
Huntington I
27' 6" x 44' Cape
1210 sq. ft. first floor



Proposed Second Floor – 767 sq. ft.

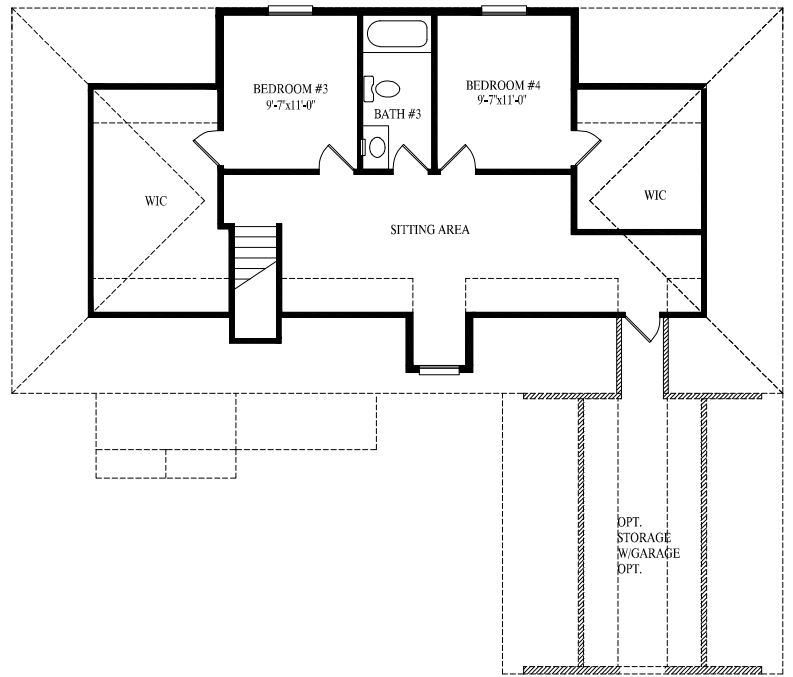
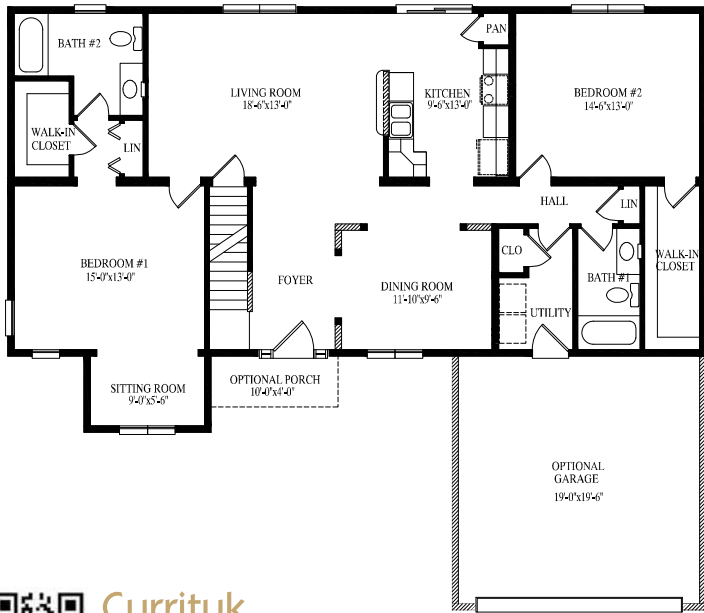


Huntington II
27' 6" x 48' Cape
1320 sq. ft. first floor



Proposed Second Floor – 1088 sq. ft.

NOTE: Above models also available in 26' 4" & 31' 6" wide



Currituk

27' 6" x 55' Cape

1573 sq. ft. first floor

1973 sq. ft. w/ garage option

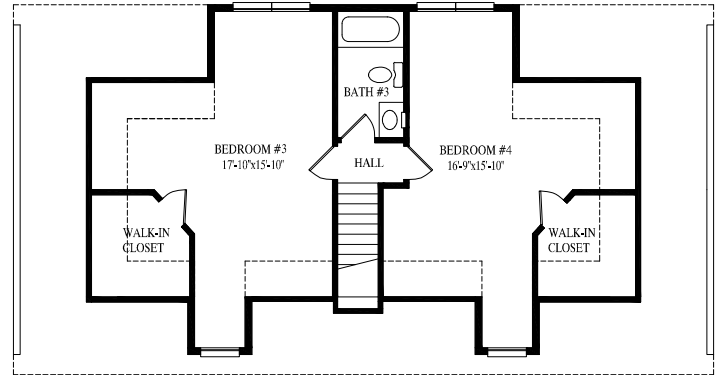
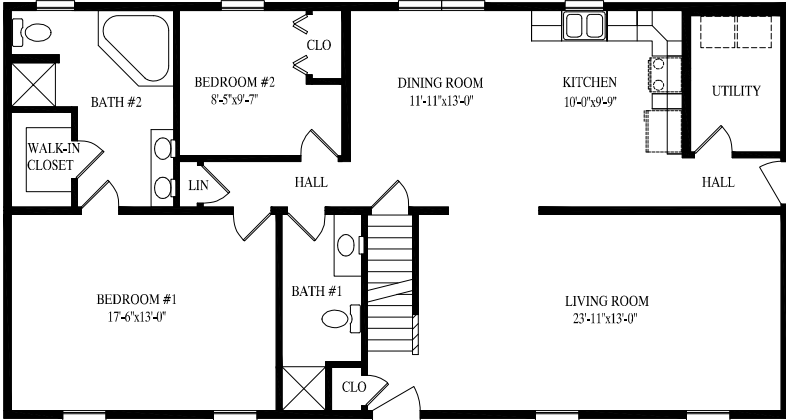
Also available in 26' 4" & 31' 6" wide

Proposed Second Floor – 900 sq. ft.
w/garage option – 1103 sq. ft.

HUNTINGTON III



Huntington III
 27' 6" x 52' Cape
 1430 sq. ft. first floor



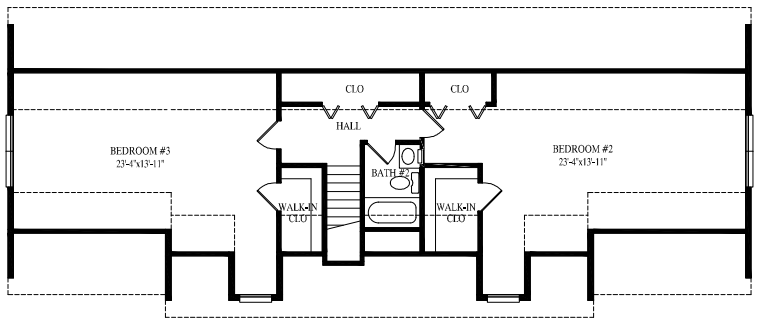
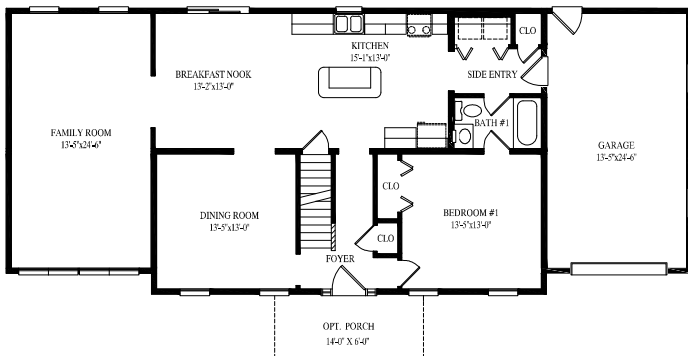
Proposed Second Floor – 851 sq. ft.



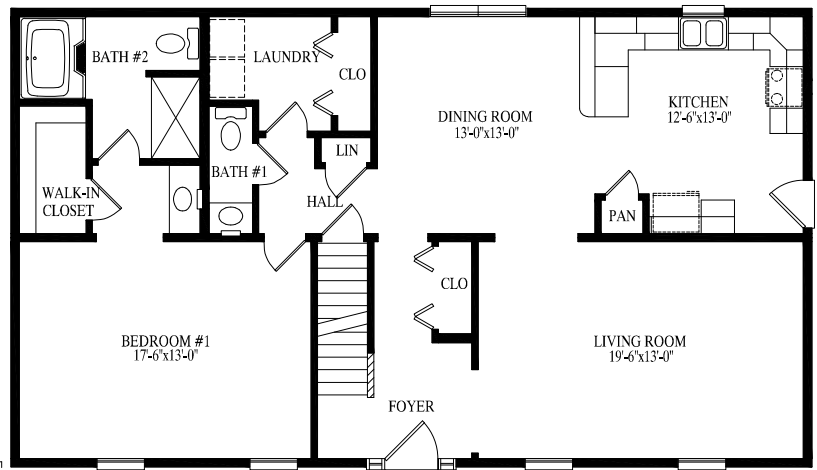
BAR HARBOR



Bar Harbor
 27' 6" x 52' Cape
 1402 sq. ft. first floor
 1759 sq. ft. w/ garage option
 Also available in 26' 4" & 31' 6" wide



Proposed Second Floor – 875 sq. ft.
 w/garage option – 1079 sq. ft.

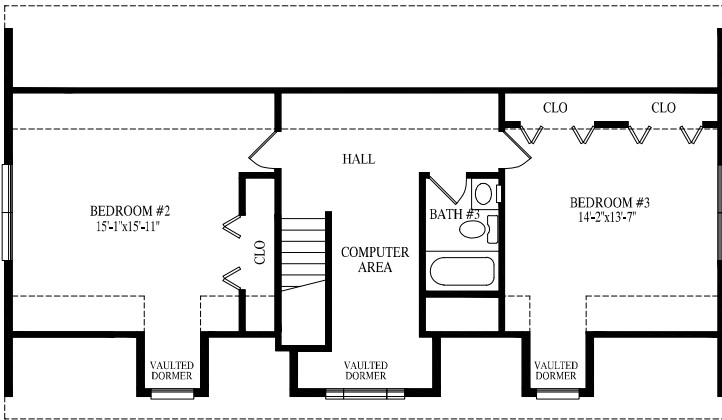


DARTMOUTH

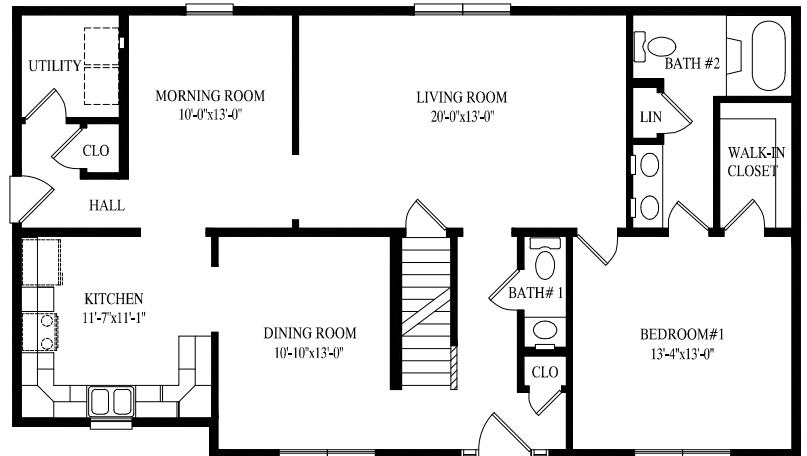


Dartmouth

27' 6" x 48' Cape
 1320 sq. ft. first floor
 Also available in 26' 4" & 31' 6" wide

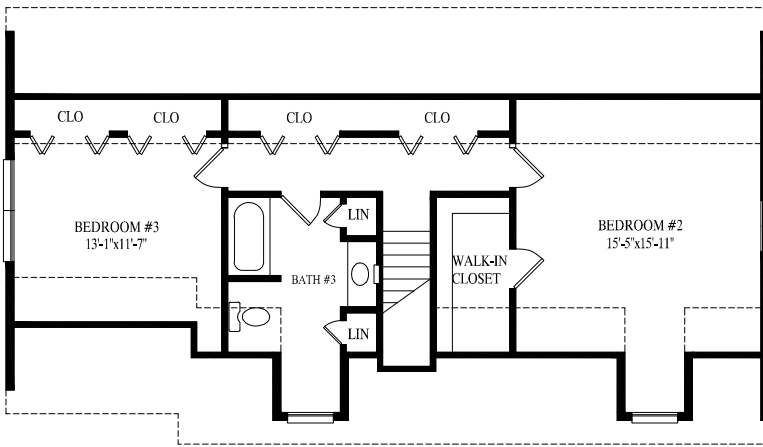


Proposed Second Floor – 874 sq. ft.



Freeport

27' 6" x 48' Cape
 1297 sq. ft. first floor
 Also available in 26' 4" & 31' 6" wide



Proposed Second Floor – 814 sq. ft.



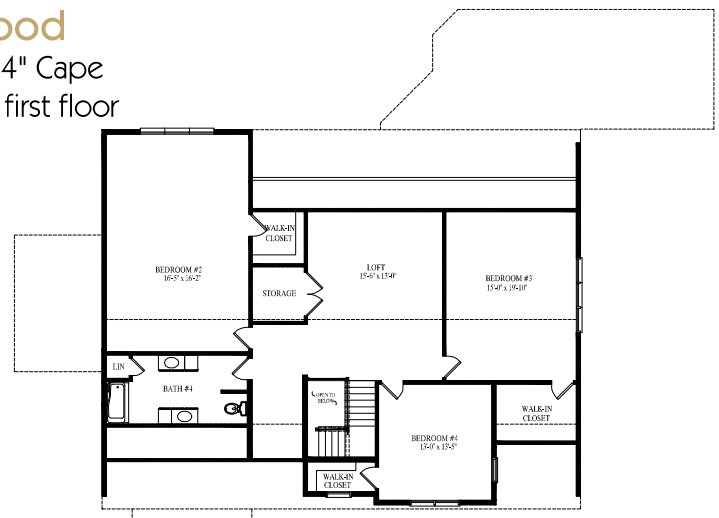
FREEPORT



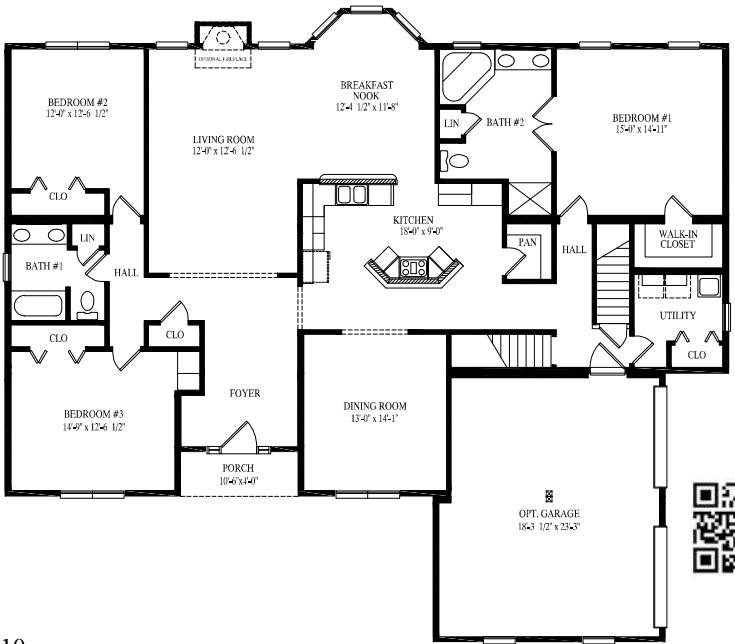
HAZELWOOD



Hazelwood
57' 5" x 80' 4" Cape
2857 sq. ft. first floor

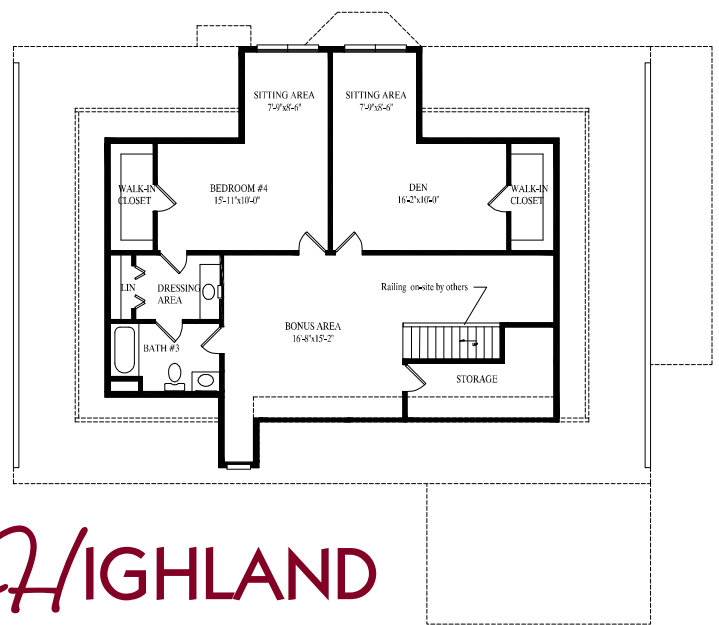


Proposed Second Floor – 1837 sq. ft.



HIGHLAND

Highland
56' 11" x 65' Cape
2351 sq. ft. first floor
2837 sq. ft. w/garage option



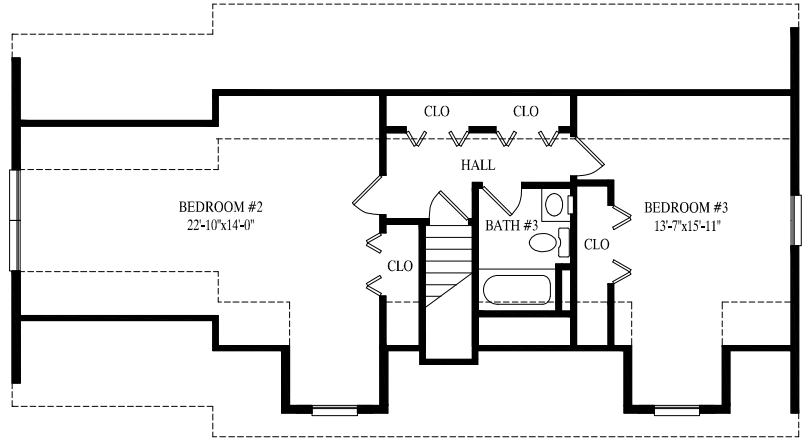
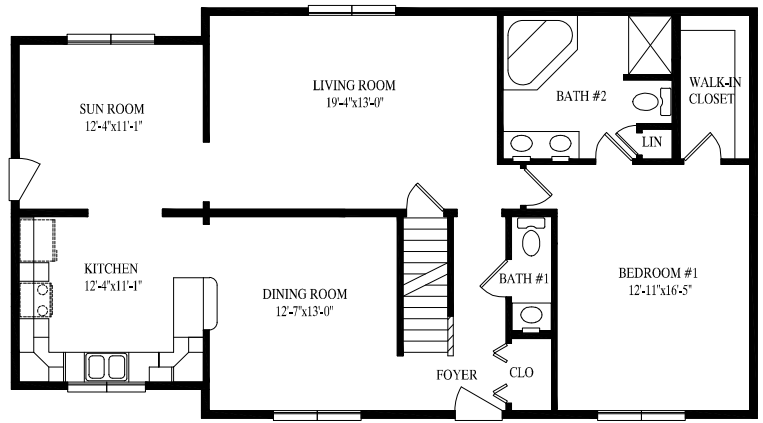
Proposed Second Floor – 1246 sq. ft.



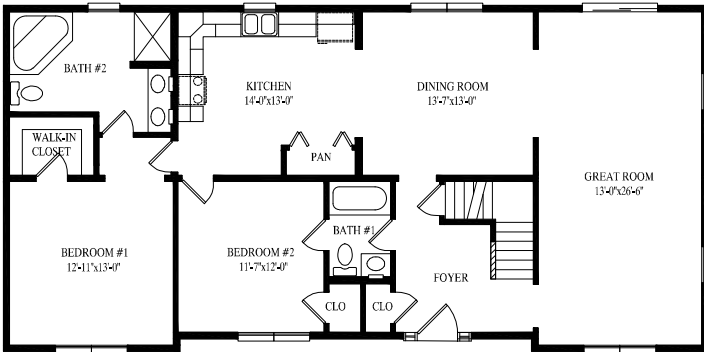
Kittery

27' 6" x 50' Cape
1326 sq. ft. first floor

KITTERY

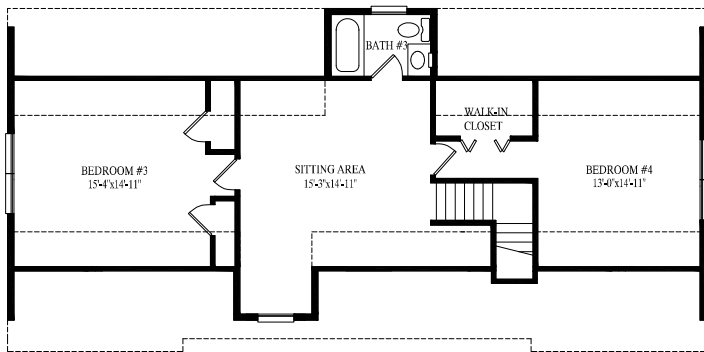


Proposed Second Floor – 836 sq. ft.



Nantucket

27' 6" x 56' Cape
1512 sq. ft. first floor



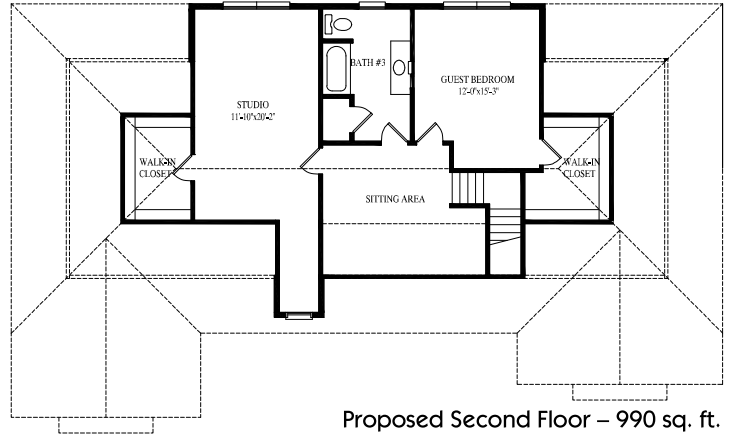
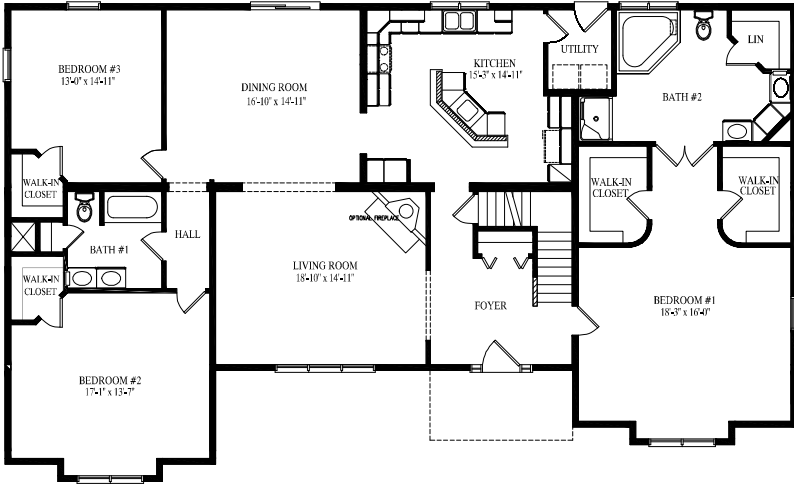
Proposed Second Floor – 952 sq. ft.



NANTUCKET

RICHMOND

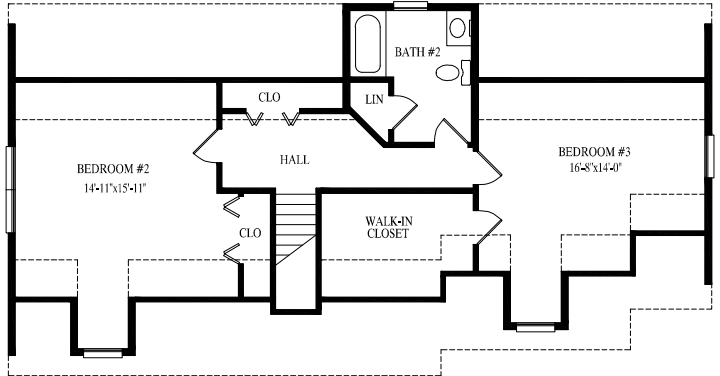
Richmond
 31' 6" x 68' Cape
 2408 sq. ft. first floor
 Also available in 26' 4" & 31' 6" wide



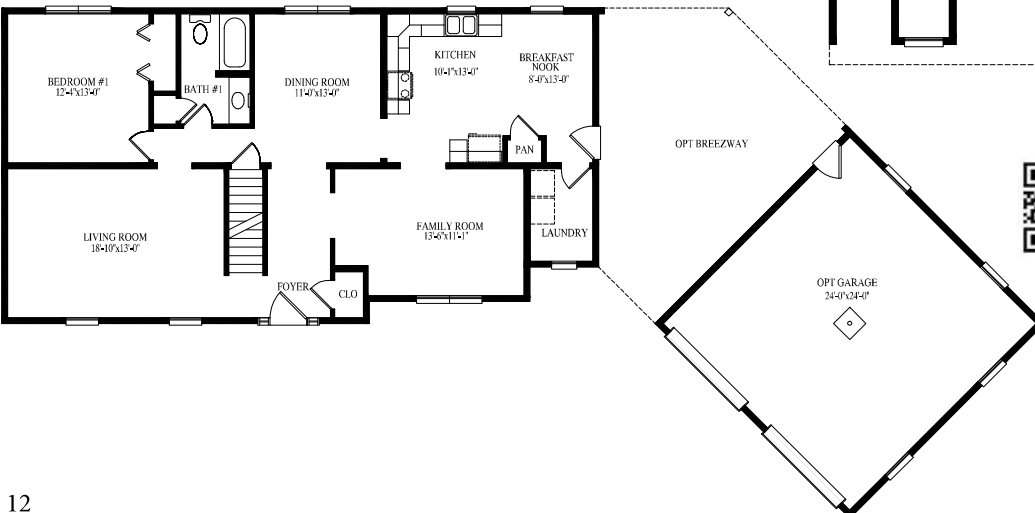
Proposed Second Floor – 990 sq. ft.



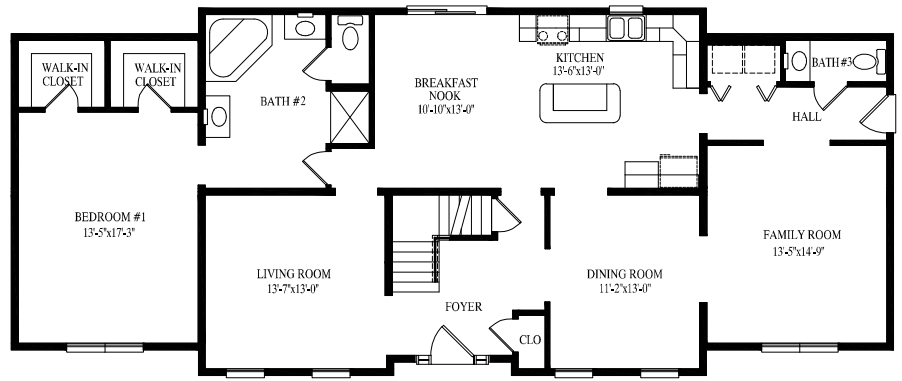
ROCKPORT



Proposed Second Floor – 903 sq. ft.



Rockport
 27' 6" x 52' Cape
 1374 sq. ft. first floor
 Also available in 26' 4" & 31' 6" wide



SOUTHPORT

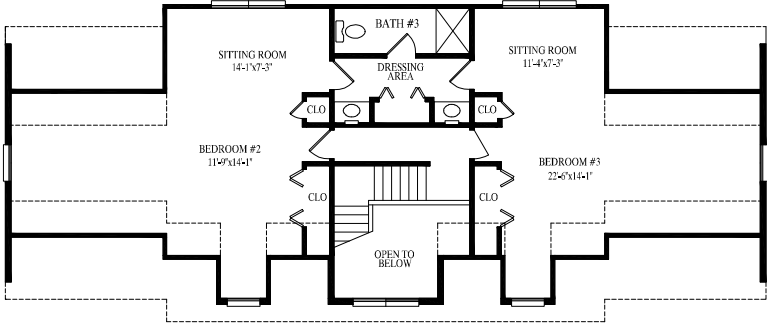


Southport

27' 6" x 66' Cape

1699 sq. ft. first floor

Also available in 26' 4" & 31' 6" wide



Proposed Second Floor – 1280 sq. ft.

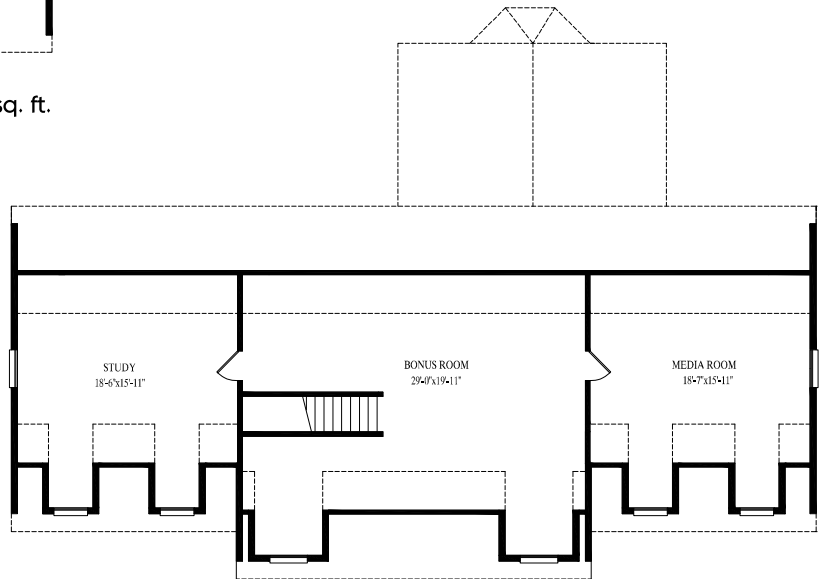


Westport

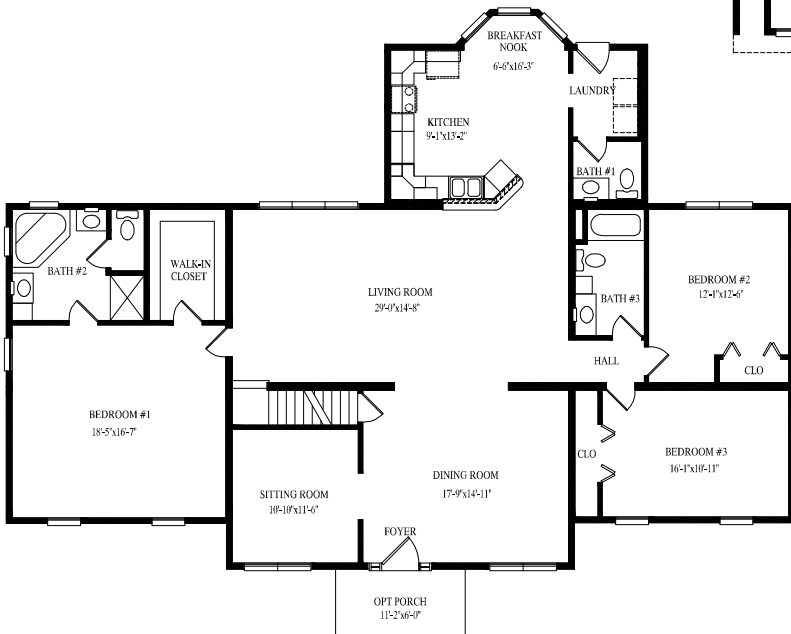
27' 6" x 68' Cape

2326 sq. ft. first floor

Also available in 26' 4" & 31' 6" wide



Proposed Second Floor – 1376 sq. ft.

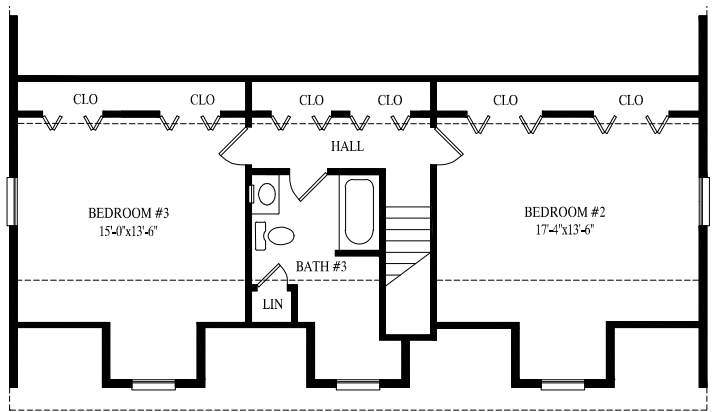
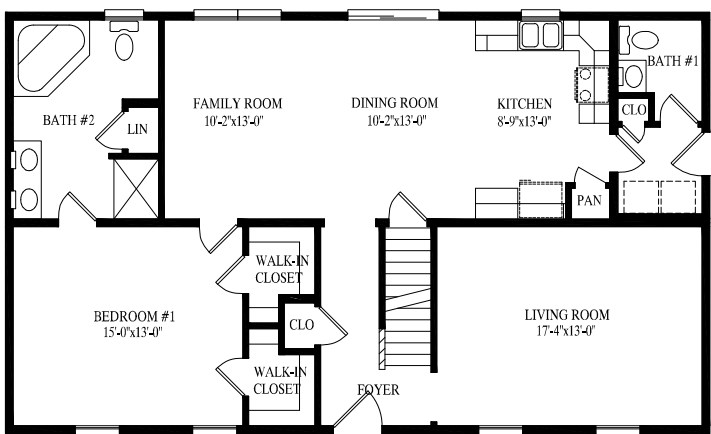


WESTPORT

HATTERAS

Hatteras

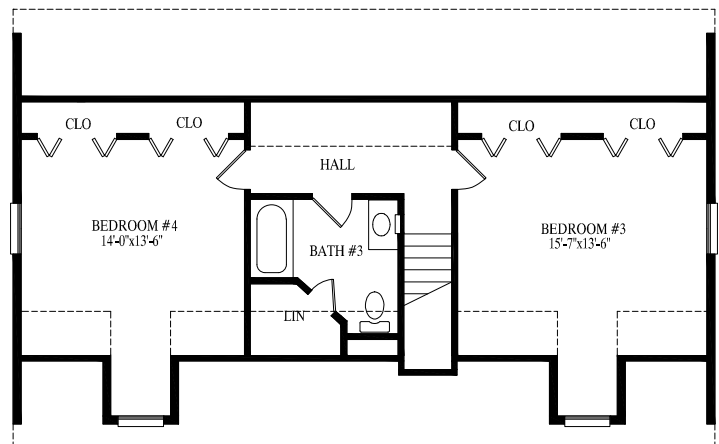
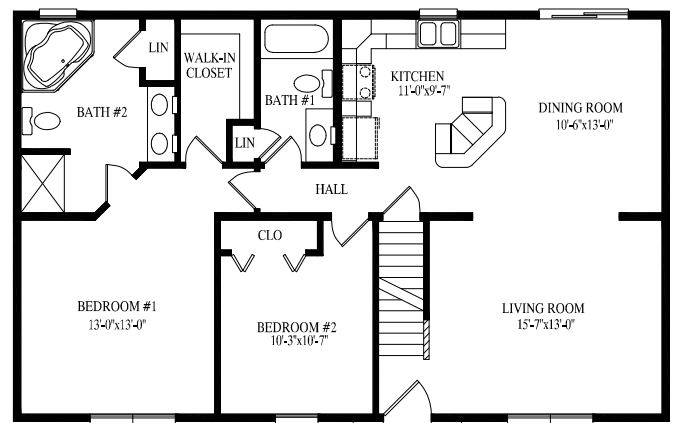
27' 6" x 46' Cape
1265 sq. ft. first floor
Also available in 26' 4" & 31' 6" wide



Proposed Second Floor – 845 sq. ft.



CHATHAM



Proposed Second Floor – 770 sq. ft.



Chatham

27' 6" x 44' Cape
1210 sq. ft. first floor
Also available in 26' 4" & 31' 6" wide

Popular Exterior Options...



Dormers



Barrel Porch



Double Reverse Gable with Porch Extension



Bump Out or Window Seat with Shed Style Roof



Full Length Decorative Shingle Return



Reverse Gable Porch Extension



Wrap Around Porch with Single Module Extension



36" High Sloped Railing



36" High Sloped Wall

Great Homes Start With Quality Products...



NOTE: All renderings are artist's concepts only and may vary from actual home.



Professional Building Systems, Inc.

72 East Market Street

Middleburg, PA 17842

Phone (570) 837-1424

Fax (570) 837-6133

www.pbsmodular.com

Your PBS Builder/Developer

Builders/Developers are not agents of Professional Building Systems.